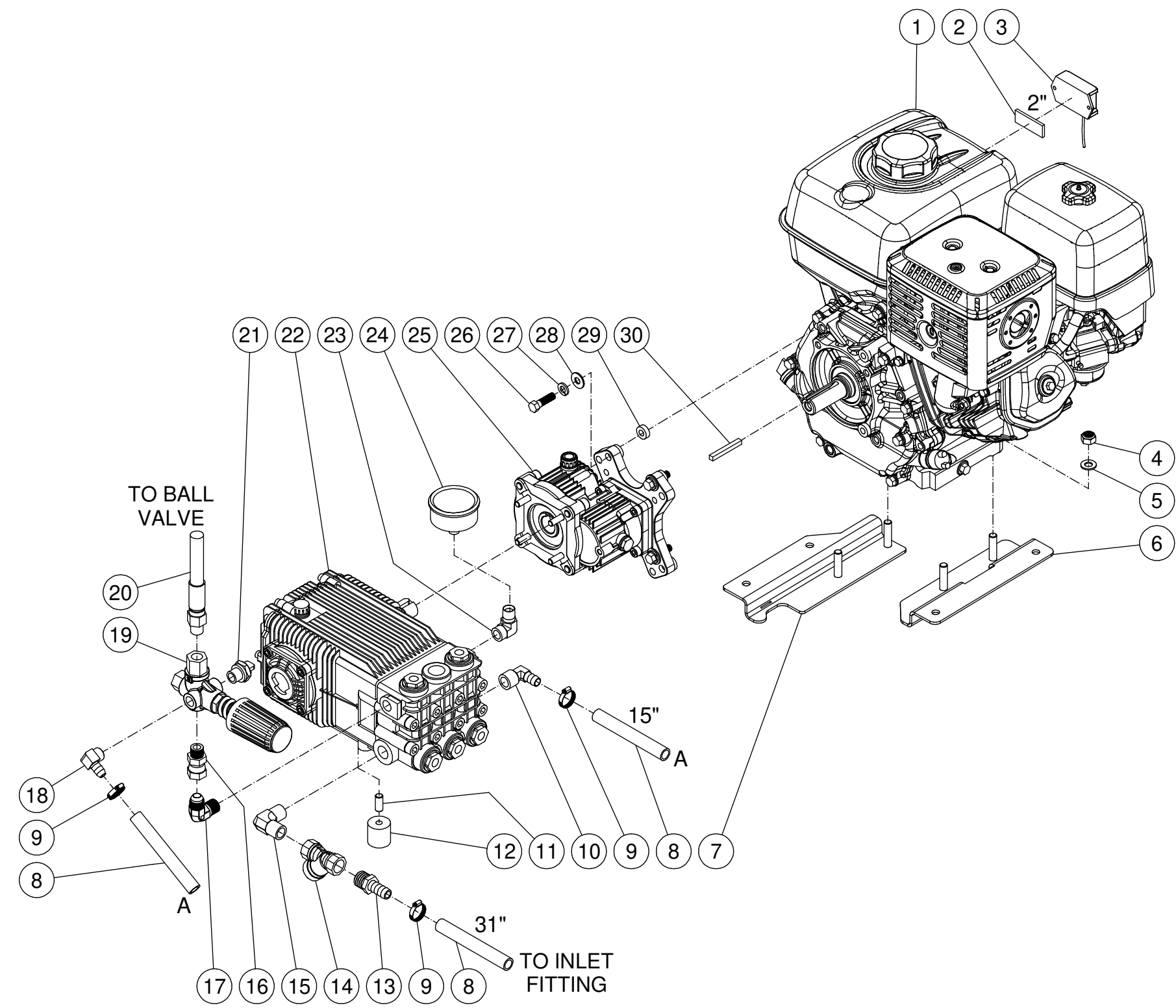


ITEM	PART #	DESCRIPTION	R/Q	QTY
1	1-0086	ENGINE - HONDA 390cc 13 HP RECOIL GX390		1
2	33-0503	DOUBLE SIDED WHITE FOAM TAPE	.167'	1
3	32-0416	GAUGE-DIGITAL TACH/HOURMETER		1
4	30-3159	HEX NYLON LOCKNUT-ZINC M10-1.5		4
5	28-0004	WASHER - ZI SAE 3/8"		4
6	20-1388A77	MOTOR Z PLATE - RIGHT		1
7	20-1387A77	MOTOR Z PLATE - LEFT		1
8	15-0007	HOSE 1/2 250psi	3.833'	1
9	42-0011	SS WORM CLAMP 3/8"-1"		3
10	23-0418	ELBOW 90°- 1/2" MNPT x 1/2" BARB		1
11	31-2020	M10-1.5mm X 23mm THREADED STUD		1
12	14-0140	VIB/ISO 30mm X 30mm HEIGHT		1
13	23-0045	BARB 1/2M X 1/2 HOSE		1
14	23-0514	1/2NPT Y FILTER - BRASS		1
15	23-0386	ELBOW - 1/2 MNPT 90 DEG BRASS		1
16	24-0037	3/8 MNPT X #8 FJIC SWIVEL		1
17	24-0092	ELBOW-3/8M X #8JIC M 90° STEEL		1
18	23-0050	ELBOW 3/8M X 1/2" HOSE BARB-BRASS		1
19	8-0633	UNLOADER- PULSAR W/CAP		1
20	15-0197	HOSE - 3/8 ID X 3/8 M SWIVEL X 3/8M X 28"		1
21	22-0114	VALVE HEAT DUMP 3/8"		1
22	3-0213	PUMP - SXW1535NL		1
23	24-0004	ELBOW - 3/8 MNPT X 1/4 FNPT		1
24	22-0465	GAUGE - 0-5000PSI 2 1/2"DIA BACK MOUNT		1
25	47-0039	GEARBOX 1" SHAFT 1:2.24 RATIO		1
26	27-0118	BOLT - HHCS - ZI GR5 3/8-16 x 1 1/4	X	4
27	29-0008	LOCKWASHER - ZI MED 3/8		4
28	28-0022	WASHER - ZI STANDARD 5/16"		4
29	46-1470	SPACER	X	4
30	43-0078	KEY - 1/4" SQ x 2 1/8"	X	1



Mi-T-M Corporation

SCALE: NTS DATE: 2/19/19 DRAWING SIZE: B APPD: DRAWN BY: JVA

DPW-4000-0AHA PUMP/ENG ASSY

DRAWING/PART NO: DPW-4000-0AHA PUMP_ENG ASSY

M:\Drawings\PRIVATE LABEL\MAKINEX\DPW-4000\DPW-4000-0AHA PUMP_ENG ASSY.iam